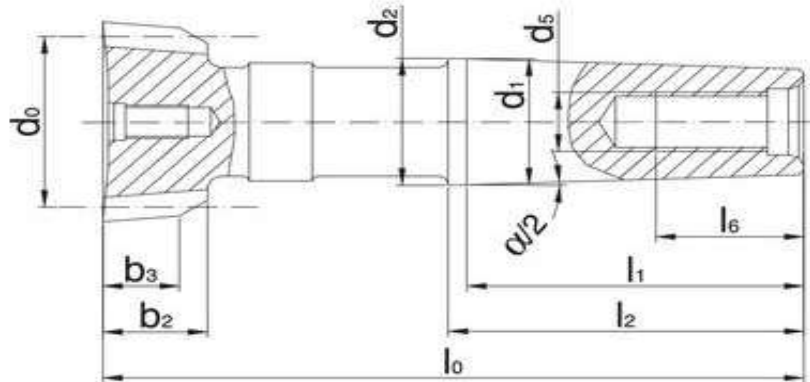


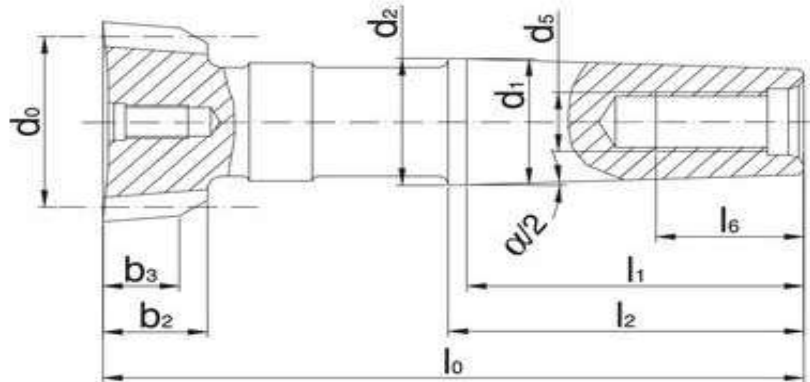
4. Schaftschneidrad DIN 5480 (Eingriffswinkel 30°)



Modul	Zähnezahl Z	Nenndurch- messer d_0	Verzahnungs- breite l_0 - l_2	Morse- kegel	Bemerkung
0.5	22	12	55	2	hapo 0.65
0.6	16	10	30	1	hapo 0.65
0.8	10	9	40	2	hapo 0.65
0.8	16	12.3	30	2	hapo 0.65
1	10	11	45	2	hapo 0.65
1	16	17	45	2	hapo 0.65
1.25	8	13	40	2	
1.25	10	15	40	2	hapo 0.65
1.25	16	21	55/65	2	hapo 0.65
1.5	9	15	60	2	hapo 0.55
1.5	10	17	55	4	hapo 0.65
1.5	16	26	100	3	hapo 0.65
1.5	16	26	125	2	hapo 0.65
1.5	40	62	50	4	hapo 0.63
1.75	16	30	80	4	hapo 0.65
2	6	15	50	2	hapo 0.65
2	8	19	85	2	hapo 0.65
2	10	22	45	2	hapo 0.65
2	10	22	80	4	hapo 0.65
2	12	26	65	3	hapo 0.55
2	16	34	65/100	4	hapo 0.65

Schaftschneidrad DIN 5480

(Eingriffswinkel 30°)



Modul	Zähnezahl Z	Nenndurchmesser d_0	Verzahnungs- breite l_0 - l_2	Morse- kegel	Bemerkung
2.5	9	25	65	2	hapo 0.55
2.5	10	28	50	2	hapo 0.65
2.5	13	35	60	4	hapo 0.65
2.5	16	43	65/100	4	hapo 0.65
2.5	18	48	160	4	hapo 0.65
3	9	31	60	2	hapo 0.55
3	9	31	45/110	4	hapo 0.65
3	10	33	55/100	4	hapo 0.65
3	12	40	150	4	hapo 0.65
3	16	52	45/110	4	hapo 0.65
4	6	30	80	3	
4	8	38	150	4	hapo 0.65
4	9	41	80	2	hapo 0.45
4	10	45	70	4	hapo 0.65
4	12	53	60/110	4	hapo 0.65
5	8	45	90	4	hapo 0.65
5	9	50	85	3	hapo 0.55
5	12	66	110	4	hapo 0.65
5	14	78	80	4	hapo 0.55
6	9	62	80	3	hapo 0.55