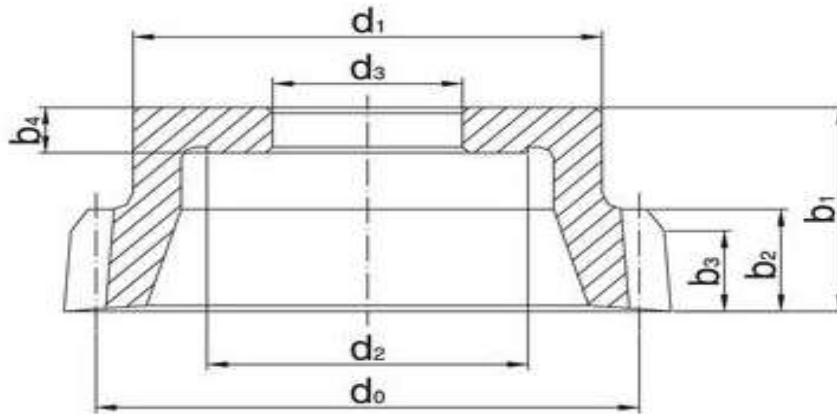


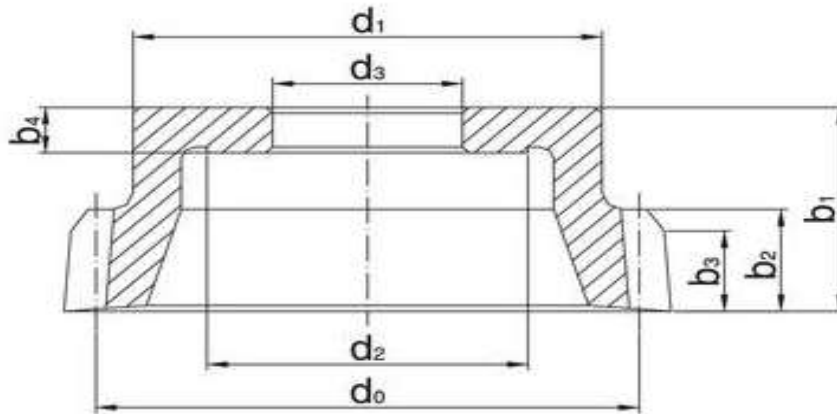
5. Scheiben- Glockenschneidrad DIN 5480 (Eingriffswinkel 30°)



Modul	Zähnezahl Z	Nenndurch- messer d_0	Breite b1	Bohrungs- \emptyset d3	Bemerkung
0.8	90	73	15	31.75	hapo 0.65
1	100	100	9	44.45	hapo 0.65
1.25	80	100	13	44.45	hapo 0.65
1.25	100	126	15	44.45	hapo 0.65
1.5	30	47	35	19	hapo 0.65
1.5	84	128	20	44.45	hapo 0.65
2	22	46	10	19	hapo 0.65
2	26	55	41	19	hapo 0.65
2	38	78	33	31.75	hapo 0.55
2	38	78	19	31.75	hapo 0.55
2	64	130	22	44.45	hapo 0.65
2	76	154	18	44.45	hapo 0.65 mit KK
2.5	26	53	38	19	hapo 0.65
2.5	30	78	35	31.75	hapo 0.65
3	18	58	40	19	hapo 0.65
3	25	79	19	31.75	hapo 0.55
3	33	103	40	31.75	hapo 0.55
3	42	129	15	44.45	hapo 0.65
3	42	129	20	44.45	hapo 0.65 mit KK
3.5	18	69	10	19	hapo 0.63

Scheiben- Glockenschneidrad DIN 5480

(Eingriffswinkel 30°)



Modul	Zähnezahl Z	Nenndurchmesser d_0	Breite b1	Bohrungs- \emptyset d3	Bemerkung
4	14	61	42	19	hapo 0.65
4	20	85	41	31.75	hapo 0.65
4	25	105	16	44.45	hapo 0.55
5	12	67	46	19	hapo 0.65
5	14	76	44	31.75	hapo 0.65
5	16	86	44	31.75	hapo 0.55/0.65
5	20	108	15	44.45	hapo 0.65
5	26	135	15	44.45	hapo 0.65
5	28	149	23	44.45	hapo 0.65
6	12	79	38	31.75	hapo 0.65
6	14	92	24	31.75	hapo 0.55
6	18	116	24	44.45	hapo 0.55
6	22	140	25	44.45	hapo 0.65
8	10	90	44	31.75	hapo 0.65
8	16	138	29	44.45	hapo 0.65
10	10	113	47	44.45	hapo 0.65
10	12	133	27	44.45	hapo 0.65
10	14	152	27	44.45	hapo 0.65