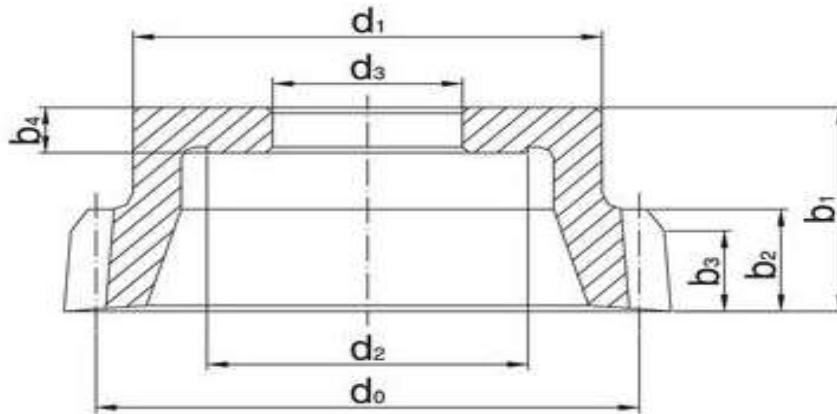


7. Scheiben- Glockenschneidrad DIN 5481



Modul	Zähnezahl Z	Nenndurch- messer d_0	Breite b_1	Bohrungs- \emptyset d_3	Bemerkung
0.26786	180	48.215		19	1.1 x m 7x8
0.367	180	66.06		31.75	1.09 x m 10x12
0.419	180	75.42		31.75	1.12 x m 12x14
0.5	150	75		31.75	1.09 x m 15x17
0.561	132	74.05		31.75	1.0 x m 17x20
0.647	120	77.64		31.75	0.96 x m 21x24
0.8	96	76.8		31.75	0.81 x m 26x30
0.889	86	76.45		31.75	0.91 x m 30x34
1.027	76	78.05		31.75	1.0 x m 36x40
1.105	68	75.14		31.75	1.03 x m 40x44
1.218	62	75.51		31.75	1.04 x m 45x50
1.218	80	100		44.45	45x50
1.312	58	76.1		31.75	1.06 x m 50x55
1.369	55	75.3		31.75	1.0 x m 55x60
1.5	46	69		31.75	0.97 x m 60x65